

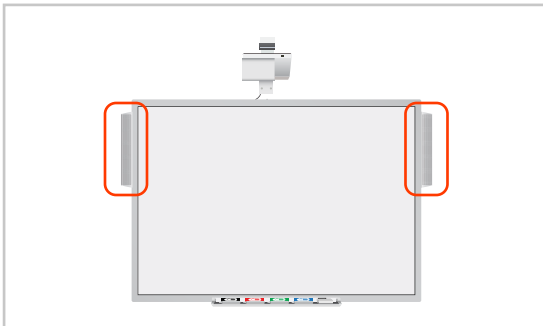
PRODUCT SPECIFICATION

# SOUND BAR SYSTEM

20W / 40W / 60W



**Position:**



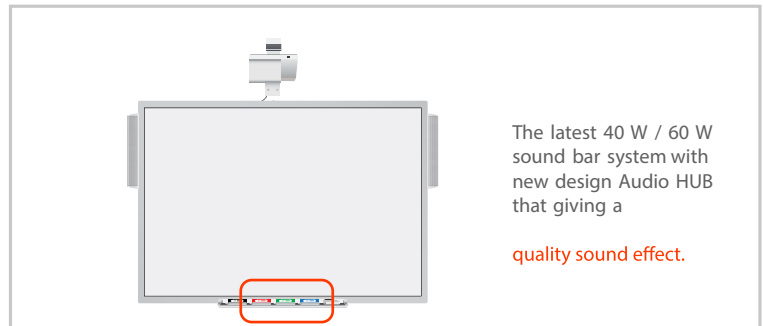
- Volume control with Audio HUB
- USB Connection to PC
- 2 x USB output port
- Interactive pen tray port

Sound Power(RMS)	A Type: 10 x 2 = 20W B Type: 20 x 2 = 40W C Type: 30 x 2 = 60W
Mounting Brackets	Perfectly fit to whiteboard frame and interactive pen tray
Frequency	45Hz - 18KHz
Connectivity Input	USB (Micro port to PC) IWB / Interactive Pen-Tray
Supported OS	Microsoft Windows, Linux, Mac
Power Consumption	USB 5V, Operating Current: <math>\leq 500\text{mA}</math>
Audio Hub Dimension	107L x 65W x 22H mm
Power Requirements	External Power DC 12V / 4A
Speaker Dimension	A Type: 410(L) x 55(W) 42(D) mm B Type: 410(L) x 55(W) 42(D) mm C Type: 1280(L) x 55(W) x 42(D) mm
Optional	2.4Ghz Wireless to PC / Wireless to Speaker

# POWERFUL AUDIO SYSTEM



**Position:**



The latest 40 W / 60 W sound bar system with new design Audio HUB that giving a

quality sound effect.



Front-side View



Side View

## INFRARED INTERACTIVE PEN TRAY



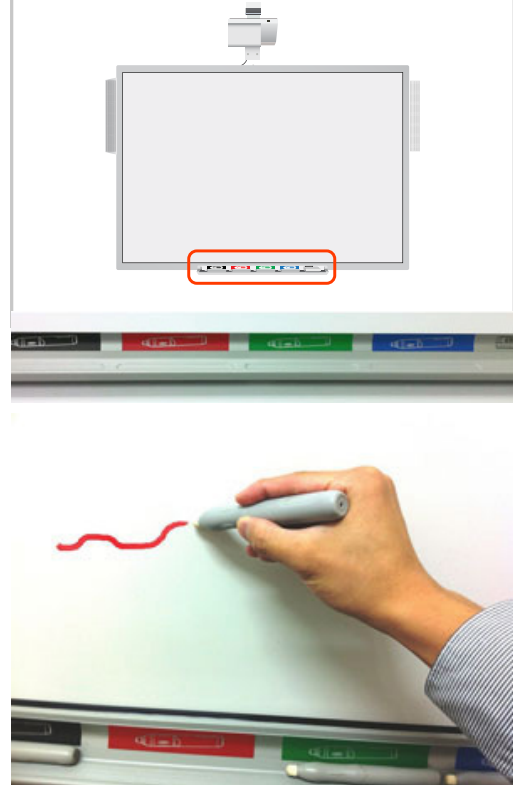
### Simple & Easy

The Interactive Pen Tray enables user to easily select different pen color or an eraser without switching buttons within the software. User can pick up any pen (Black / Red / Green / Blue) or an eraser from the Interactive Pen Tray and the software will identify which color is selected. The pens do not require battery to use.

### Auto Detect Multi-Color Mode

The Interactive Pen Tray can automatically activate multi-color mode (2C / 3C / 4C) when more than one pen are picked from Pen Tray.

### Position:



## WIRELESS RECEIVER

For Infrared Interactive Whiteboard



### Features

1. Range up to 10m.
2. 2.4GHz wireless connection.
3. Auto Scanning and easy pairing.
4. Support 30 different channels to avoid potential interferences.